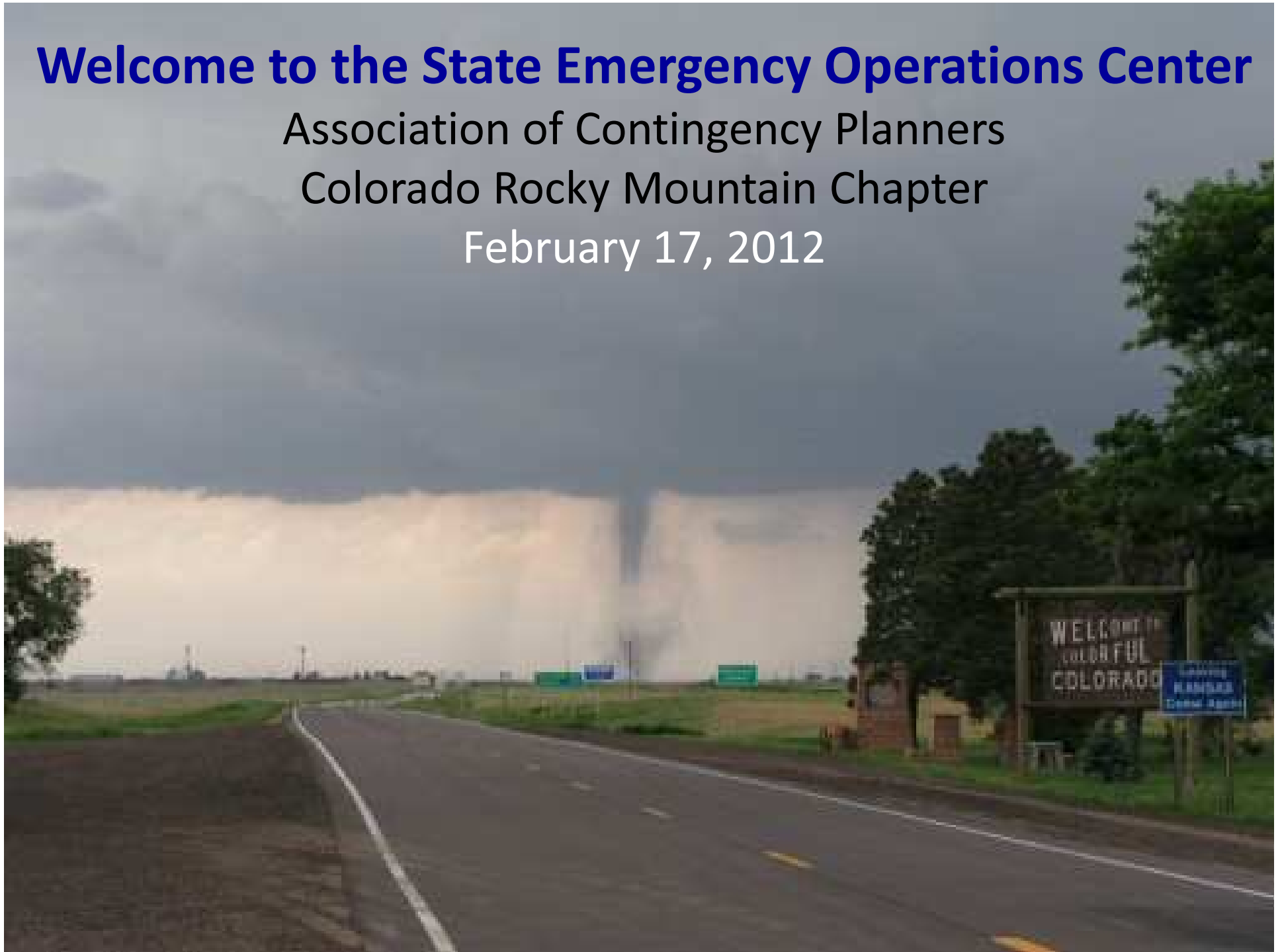


# Welcome to the State Emergency Operations Center

Association of Contingency Planners  
Colorado Rocky Mountain Chapter

February 17, 2012



# Recent Colorado Disasters

**Town of Windsor, May 2008**



**Boulder County, September 2010**



# National Trends and Standards

- **Presidential Policy Directive 8 (PPD-8)**
  - National Preparedness Goal
- **National Disaster Recovery Framework (NDRF)**
  - Recovery Support Functions (RSFs)
- **Whole of Community**
  - Businesses
  - Nonprofit Organizations
  - Faith-Based Organizations
- **Vulnerable Populations**
  - Disability community
  - Pets/companion animals



# INTENSITY OF RECOVERY ACTIVITIES



## SHORT-TERM RECOVERY

### Examples include:

- Mass Care/Sheltering
  - Provide integrated mass care and emergency services
- Debris
  - Clear primary transportation routes
- Business
  - Establish temporary or interim infrastructure to support business reopenings
- Emotional/Psychological
  - Identify adults and children who benefit from counseling or behavioral health services and begin treatment
- Mitigation Activities
  - Rigorous assessment and understanding of risks and vulnerabilities

## INTERMEDIATE RECOVERY

### Examples include:

- Housing
  - Provide accessible interim housing solutions
- Debris/Infrastructure
  - Initiate debris removal
  - Plan immediate infrastructure repair and restoration
- Business
  - Support reestablishment of businesses where appropriate
  - Process insurance claims for policy holders
- Emotional/Psychological
  - Engage support networks with the help of faith-based and community organizations for ongoing care
- Mitigation Activities
  - Develop public education to inform community members and local governments of opportunities to build back stronger

## LONG-TERM RECOVERY

### Examples include:

- Housing
  - Develop permanent housing solutions
- Infrastructure
  - Rebuild infrastructure to meet future community needs
- Business
  - Implement economic and business revitalization strategies
  - Facilitate funding to business rebuilding
- Emotional/Psychological
  - Follow up with adults and children who need ongoing counseling or behavioral health services and provide case management services
- Mitigation Activities
  - Implement mitigation strategies for stronger recovery

# Colorado Recovery Plan



- ☀ Establishes Recovery & Mitigation Task Force
- ☀ Incorporates Recovery Support Functions
- ☀ Defines state agency roles & responsibilities
- ☀ Recognizes nonprofit/faith-based partners
- ☀ Engages private sector participation in strategies and solutions

# Recovery and Mitigation Task Force

- **Purpose**

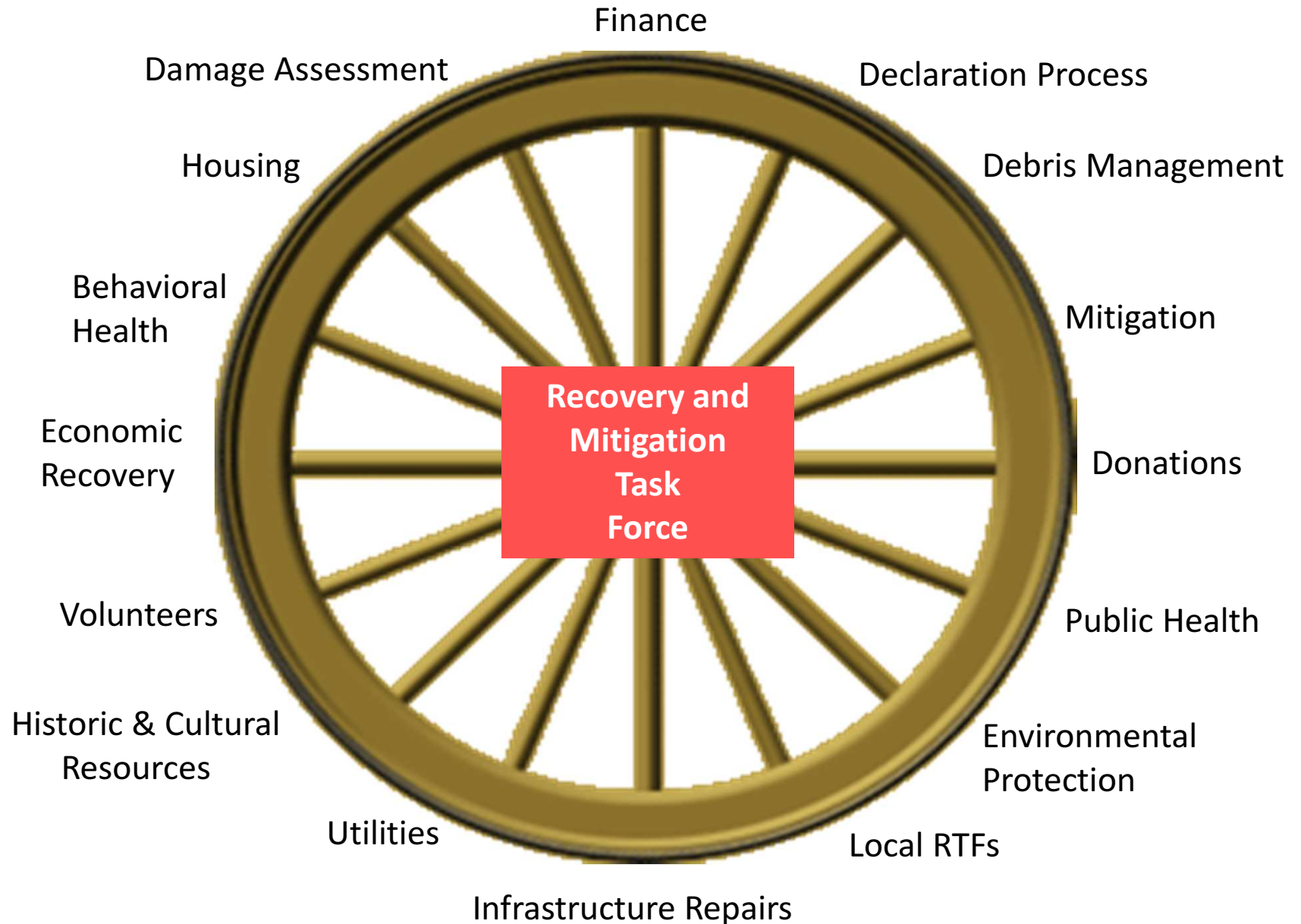
- Communicates with local recovery officials
- Prepares State-level strategy for supporting local recovery needs/objectives
- Coordinates with federal agencies and leverages outside support
- Engages non-governmental partners to formulate best possible strategies

- **Membership**

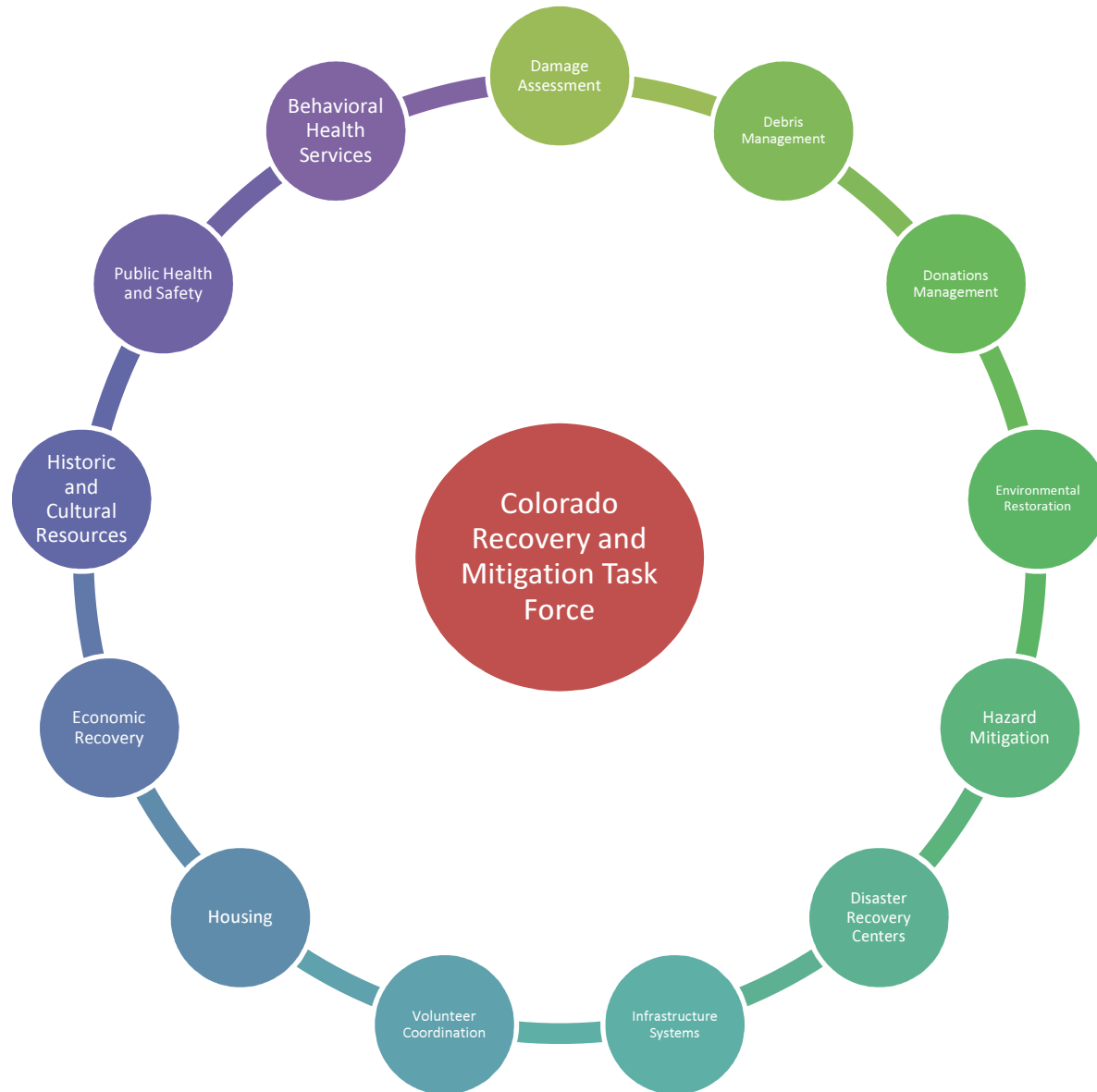
- Governor's Office/State Departments
- Affected Jurisdictions
- Federal Agencies
- Business Community
- Nonprofit/Faith-Based Organizations



# Recovery Support Functions



# State Recovery Organization



# Limitations of Government

- >70% of relief/assistance to individuals and families following disasters comes from non-governmental sources
- Strategies for community recovery and economic redevelopment require public support and private sector involvement
- Public-private partnerships are the key!

Bob Wold, Recovery Manager

Colorado Division of Emergency Management

[Bob.Wold@state.co.us](mailto:Bob.Wold@state.co.us)