



# Shaky Ground Newsletter

<http://crmc-acp.org>

The CRMC ACP Web Site

January 2010

## Board Members: Officers

### President

Sharon Bennett  
FirstBank Data Corp  
president@crmc-acp.org

### Vice President

Roger Bickel  
Caridianbct  
vice-president@crmc-acp.org

### Secretary

Tara Mitchell  
Western Union  
secretary@crmc-acp.org

### Past President

Gerry Lockhart  
G. Lockhart Assoc.  
past-president@crmc-acp.org

### Treasurer

Sam Jariwala  
treasurer@crmc-acp.org

## Directors

### Information/Web

Andy Amalfitano  
AmalfiCORE  
info@crmc-acp.org

### Membership

Gayle Johnson  
Alta Colleges  
membership@crmc-acp.org

### Programs

Fred Mahe  
Cornerstone Records  
Management  
programs@crmc-acp.org

### Publications

Bill Jancouskas  
Qwest Communications  
publications@crmc-acp.org

### Education & Seminars

Howard Pierpont  
DERA  
education@crmc-acp.org

### Public Relations

Paul Thomann  
EMC  
public-relations@crmc-acp.org

## Next Month's Members Meeting

DATE: January 15, 2010

SPEAKER: Donovan Puffer, Regional Analyst, DHS/FEMA Region VIII

TOPIC: "Currently at FEMA"

BIOGRAPHY: Donovan Puffer is an emergency management specialist with the Department of Homeland Security, Federal Emergency Management Agency (FEMA) Region VIII office in Denver, Colorado. He currently is the regional emergency analyst in the Office of the Regional Administrator.

Donovan joined the Denver regional office in May 2002. Previously, he worked for 10 years at FEMA Headquarters in Washington DC. Since becoming the Regional Analyst in December 2006, he has worked to put in place the Regional Office's strategic plan, annual performance report, mission & functions, delegations of authority, Regional status briefings, performance metrics, and other processes and products to help the Region work effectively. He also serves as the coordinator for the Regional Advisory Council, an intergovernmental group that offers recommendations to the Region.

### Location:

FEMA Region VIII Office  
Denver Federal Center  
Building 710 and its annex, 710A

Directions: The FEMA Region VIII office is on the Denver Federal Center, Building 710 and its annex, 710A; both buildings are right across from the U.S. Post Office, on the south side of the Fed Center, along Alameda between Kipling and Union/Simms. Access the Federal Center through the Main Gate on Kipling Avenue, between Alameda and 6<sup>th</sup> Avenue. Show your driver's license to gain entry to the Fed Center, then drive down Main Avenue and take a left at the 4-way stop sign onto Seventh Street. FEMA's buildings will be on their right side. Parking lot on is on the right. Walk down the sidewalk along Building 710A (the above-ground building) and use the main entrance to Building 710 (the below-ground building) where you will sign in with the guard and pass through the magnetometer.

Registration & Networking will begin at 1:00pm and the Meeting will begin at 1:30 pm. So mark your calendars and hope to see you there

## In this Issue

- \* Letter from the President
- \* New Board Members

- \* PS Prep White Paper
- \* Division of Emergency Management Announcements



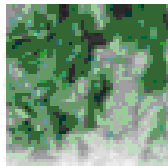
#### **Records Storage & Management**

Take advantage of our services to manage records by the carton, file, document, or image. We provide solutions for vital, active, and inactive records through a suite of services in 445 record centers worldwide.



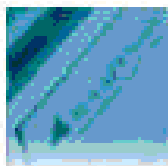
#### **Off-Site Data Protection**

Off-site. Off-line. Out-of-reach. On-time. Low-risk.  
With Off-Site Data Protection, your backup data is secure and available - recovered fast - when you need it. Because without your data, there is no recovery.



#### **Secure Shredding**

On-site or off-site, our screened personnel can destroy your confidential information - using modern shredding equipment and highly secure processes - and certify that destruction, giving you a legal audit trail.



#### **Digital Services**

Whether you need long-term archiving and access to electronic records or you need to ensure your backup data is always current and available for recovery, we have the solution.

## CRMC ACP Mesa Level Sponsors



**SunGard Availability Services help your business move forward with the most advanced and widest choice of information availability options in the industry**

From virtualization to hot sites to replication and vaulting—SunGard Availability Services does it all. And it's all we do. That kind of focus helps ensure high availability of data, applications and systems and fits your needs and budget precisely.

When we partner with you, you worry less about the road ahead. Here's why: a track record of 100% successful recoveries; over 60 facilities with redundant power connected to SunGard's secure global network; and more than 20,000 end-user positions in facilities across North America and Europe. SunGard Availability Services—the information availability solution for businesses that must run non-stop. **Keep moving, call 1-800-468-7483 or visit [www.availability.sungard.com](http://www.availability.sungard.com).**



### When Customers Connect – Experience is Everything

When it comes to your customers, **experience is everything**. In fact, you're doing everything you can to make sure that experience with your brand is rewarding for them and profitable for you. Every customer touchpoint, every application, every website, every email, every successful campaign launch. Each of these complex functions plays an equally important role in ensuring the success of your business and online brand.

Savvis understands these needs. Many of the world's top brands trust their user experience to Savvis. It's not just our expertise in web hosting; we understand what goes into building and maintaining an ecosystem throughout the entire brand experience landscape. Beyond IT infrastructure—beyond IT performance—Savvis has combined a powerful set of tools that support every piece of your company's online identity from IT infrastructure to the end user experience. We'll connect you with online control of each of these features through our customer portal, Savvis Station.

We'll help you to create a first-class brand experience without having to piece together and manage services from multiple providers and platforms. Our integrated web solutions will help you to focus on campaigns that will connect with your customers and drive revenue to your business.

#### WEB LIFECYCLE MANAGEMENT

Simplify the tasks associated with maintaining your website, whether it's code and content releases or application and product updates - we can help.

#### APPLICATION EXPERTISE

Online communities are prime marketing channels that require your online marketing efforts to have the best technologies backing them. We can help you find the best applications and make the most of them.

#### END USER EXPERIENCE MANAGEMENT

Ensuring the best experience for your customer is one of the most critical elements of an online campaign. Learn how to optimize your campaign all the way to your customer's desktop.

#### BRAND PROTECTION

Security threats, downtime, recovery, capacity issues, poorly performing applications are just a few of the things that can harm your brand. We can help protect against these pitfalls and keep you out of the headlines.

#### CLOUD COMPUTE

Leverage a more flexible, controllable and cost efficient computing environment. Provision operating system instances when you need them with short-term flexible business terms.

#### MARKETING EFFECTIVENESS

Building and launching a website will only take you so far. Who is visiting your site? What pages are the most popular? What adjustments need to be made? Learn how Savvis Web Analytics can help you make the most of your online campaigns.

## Employment

As a service to both individuals and employers within the contingency planning community, CRMC-ACP will post descriptions for jobs available regionally.

Employers: To submit a listing, please send an email to the Webmaster and attach your job description in Word format, as you would like it to be seen. Postings will remain on the site for 30 days unless renewed.

Please visit the CRMC ACP Web site in the Members Area for new listings.

Remember to Visit the CRMC ACP Web Site at <http://crmc-accp.org> often for new News and items of interest to all Contingency planners

CRMC ACP Mesa Level Sponsors



CRMA ACP Foothill Level Sponsors



## Letter from the President

Welcome to 2010 Rocky Mountain Chapter of Association of Contingency Planners.

I would like to thank all of our past ACP Board for a great job! The communication, organization and programs were exceptional. I also want to thank the new Board members for volunteering to help with our Association in 2010. In addition to full time jobs, the extra effort of giving your time, talent, knowledge and support for our chapter is awesome.

Some predictions I found from a 'reliable' source tell us of many disasters coming our way.

The Psychics and Mediums Network predictions for 2010 are...

- The monsoon arrives late but falls as one torrential downpour causing unprecedented flooding and human tragedy. Florida sees three major hurricanes in close succession that strike deep into the continent. There will be higher than normal tremors on San Andreas Fault line.
- System failures on the US space lab require a rescue mission with Russian help.
- Japanese bullet train terrorist attack attempt is foiled.
- Nationwide strike by civil servants, including the Post Office, causes widespread disruption.
- The government announces that it plans to renationalize the railways.

We don't need a crystal ball to forecast the need for contingency planning. The need for Contingency planners should grow in 2010. That's my prediction!

I want to challenge each member to find others in our field and bring them to an ACP meeting to grow our membership. There are a lot of contingency planners out there, go bring them into the fold.

If you have any ideas for programs, have a meeting room for 40-50 people for one of our meetings, know of a potential sponsor or speaker, or have an article for our newsletter, please send them to anyone on the board. The more you participate, the more you get out of your membership.

I look forward to working with all of you to make our chapter interesting, educational and fun. Happy New Year!

Sharon Bennett, CBCP

## New Boards Members

We have newly elected members of the Board for 2010.

Please let us introduce - .....

President - Sharon Bennett

Vice President - Roger Bickel

Secretary - Tara Mitchell

Membership Director - Gayle Johnson

Programs Director - Fred Mahe

Information Director / Web Master - Andy Amalfitano

Publications Director - Bill Jancouskas

## New Boards Members

Education & Seminars Director - Howard Pierpont

Public Relations Director - Paul Thomann

Returning Board Members are Sam Jariwala, our Treasurer, and Tara Mitchell moving from Membership to Secretary.

Welcome aboard to all the new and returning members. Please congratulate the new members when you get a chance and we hope you volunteer for one of the subcommittees the members will stand up during the year.

## PS Prep White Paper

(From Gerry Lockhart) Ann Pickren is a colleague of mine and is an expert in business continuity and disaster recovery. The white paper on PS Prep\* is Ann's perspective on what the government may do in the way of auditable standards and what implications there are for small, medium and large businesses. Ann has given us permission to share her thoughts with our ACP chapter. In the future, we may be able to get Ann to speak at one of our meetings so that we can have real time discussion on this subject.

To see the Public Law 110-53 Title IX White Paper from Firestorm click on the following URL to our website <http://crmc-acp.org> under the members-only page under "Hot Topics"

*\*Permission obtained from author*

## Division of Emergency Management Announcements<sup>1</sup>

### Adams County Office of Emergency Management (OEM) - Intern Opportunity

Get involved. Serve your community. If you can't serve your community, serve someone else's... like Adams County! Adams County OEM is looking for a volunteer intern. The intern would work directly with emergency management coordinators on various projects, including hazard mitigation planning and plans review, supporting Local Emergency Planning Committee (LEPC) meetings, and Emergency Medical Services (EMS) council meetings. Most importantly if you are a job-seeker in the emergency management field, the service offers emergency management-related experience and training opportunities - for more and for links to the application, check out <http://coemergency.blogspot.com/2010/01/adams-county-office-of-emergency.html>

---

<sup>1</sup> Authorized by Brandon William, Division of Emergency Management, 01/08/10

## Division of Emergency Management Announcements

Training/Workshops (new courses for this week's report have an \*\*\* in front of the date) -  
NOTE: Locations are indicated by County

1/27/10-1/28/10 (Jefferson County)

DHS-Approved Advanced Planning Concepts: Developing Incident Action Plans

Contact: Todd Manns, Toddmanns@att.net or admin@thebluecell.com

\*\*\*2/16/10-2/18/10 (Jefferson County)

Continuity Program Managers Course (L548)

Contact: Ken Hudson, ken.hudson@dhs.gov - (303) 235-4658

2/23/10-2/25/10 (El Paso County)

Governor's Emergency Management Conference

<http://www.cemacolorado.com>

Contact: Cindy VonFeldt, cindy.vonfeldt@state.co.us - (720) 852-6628

\*\*\*3/2/10-3/3/10 (Jefferson County)

ICS-400 - Advanced ICS Command and General Staff - Complex Incidents

Contact: Tom Witowski, tom.witowski@denvergov.org - (720) 865-7651

3/4/10-3/5/10 (El Paso County)

ICS-300

<http://www.co.train.org> - Course ID: 1005860

Contact: Regional Training Coordinator, cdphe.co.train@state.co.us - (303) 692-2683

\*\*\*3/23/10-3/24/10 (Logan County)

G-290 - Basic Public Information Officer (PIO) Course

Contact: Robyn Knappe, robyn.knappe@state.co.us - (720) 852-6617

6/11/10-6/12/10 (Denver County)

Food Vulnerability Assessment Workshop

Contact: Michelle Motsinger, michelle.motsinger@state.co.us - (303) 692-3647

## Words from our Webmaster

### Website and Information

Information exchange among ACP members is a valuable tool. It broadens our perspective and brings us to a new level of awareness. I encourage all members to take advantage of the 'Members Only' section of our CRMC-ACP website. The website has been updated to reflect 2010. Within the next few weeks, I will be sending out an online survey (to your email of record) to gather ideas on how you might like to see modifications to the existing website. Keep in mind, the color scheme and some portions of the layout are dictated by ACP national. Until then, you may contact Andy Amalfitano at [Info@CRMC-ACP.org](mailto:Info@CRMC-ACP.org), or (720) 220-6466.